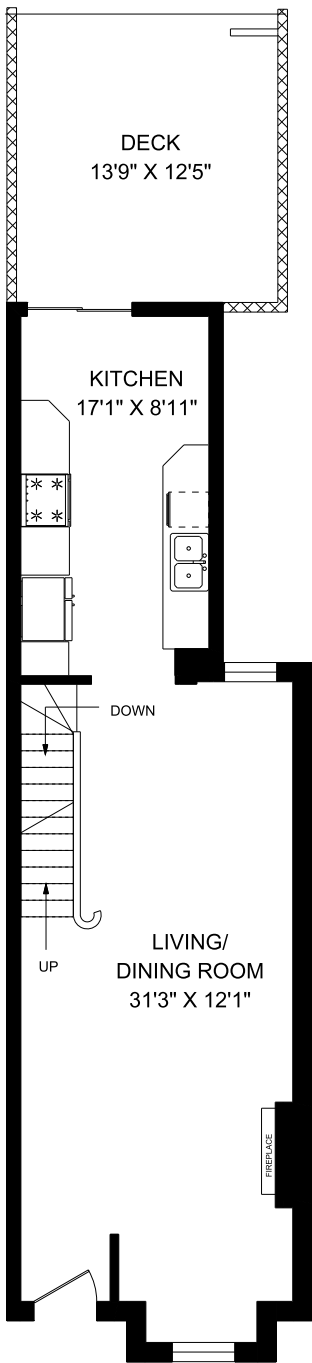


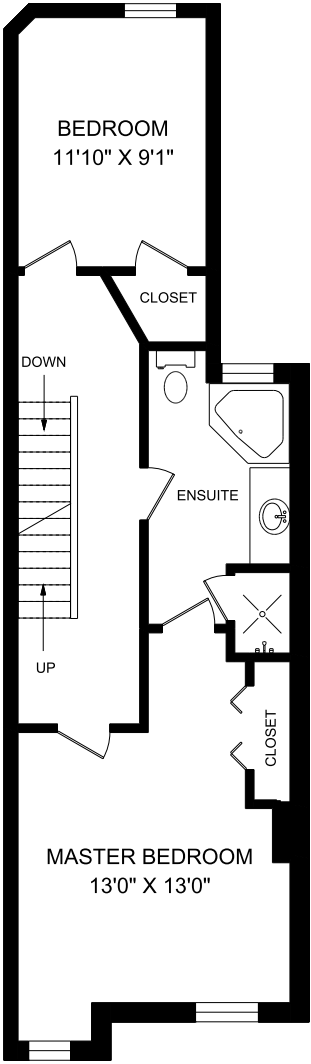
# 21 SALISBURY AVENUE



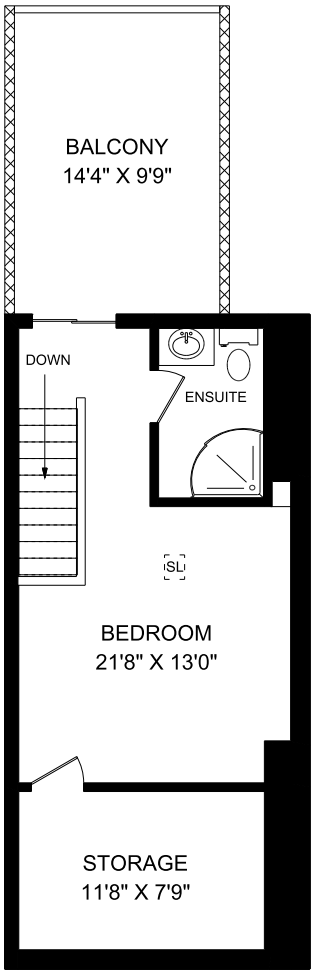
MEASURED ON AUGUST 30, 2016  
ROOM SIZES SHOULD BE  
CONSIDERED APPROXIMATE  
SINCE MEASUREMENTS ARE SUBJECT  
TO CERTIFICATION.  
© 2016 PLANIT MEASURING®



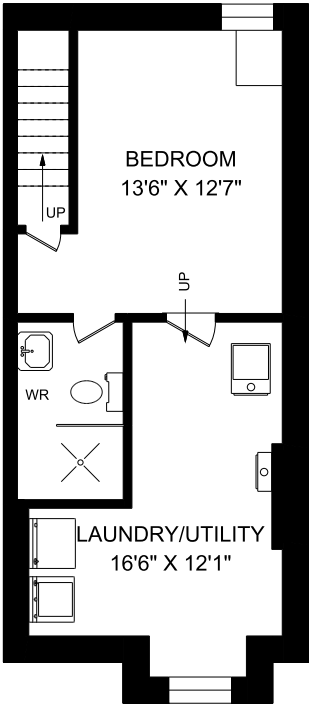
MAIN FLOOR  
634 SQUARE FEET



SECOND FLOOR  
625 SQUARE FEET



THIRD FLOOR  
443 SQUARE FEET



LOWER LEVEL  
460 SQUARE FEET

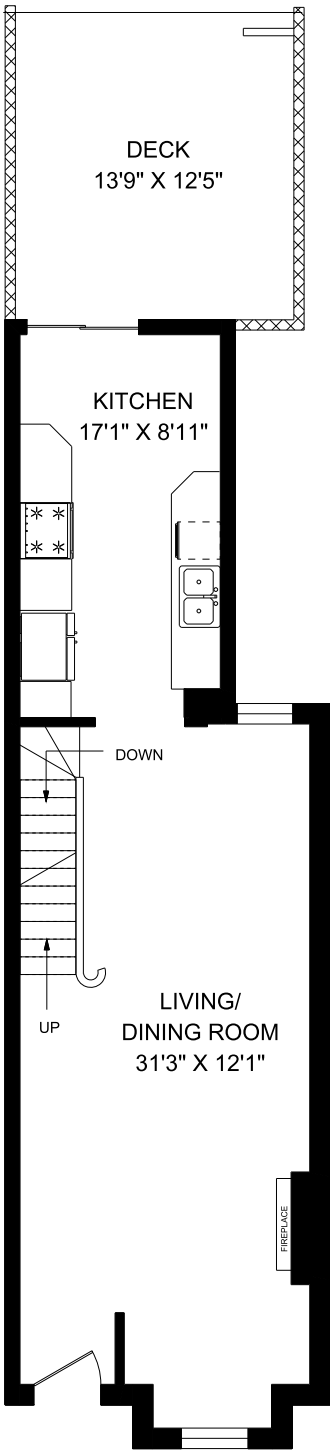


# 21 SALISBURY AVENUE

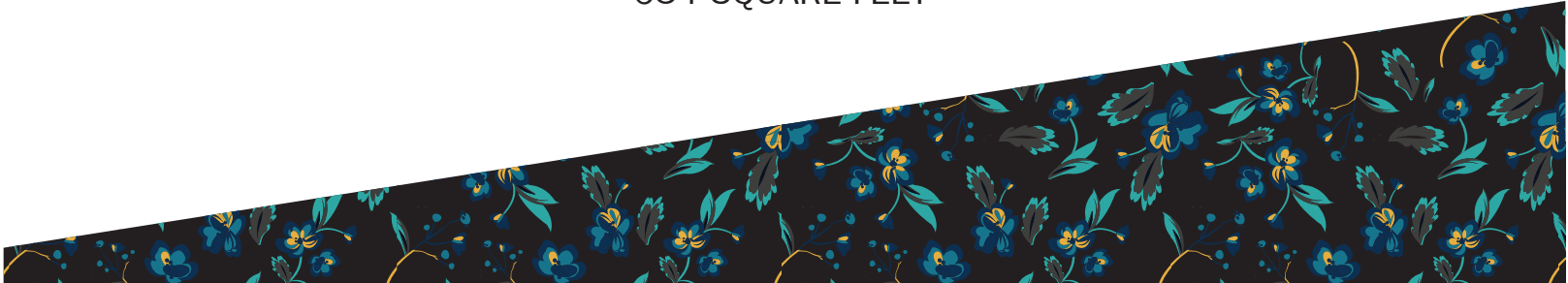


MEASURED ON AUGUST 30, 2016  
ROOM SIZES SHOULD BE  
CONSIDERED APPROXIMATE  
SINCE MEASUREMENTS ARE SUBJECT  
TO CERTIFICATION.

© 2016 PLANIT MEASURING<sup>®</sup>



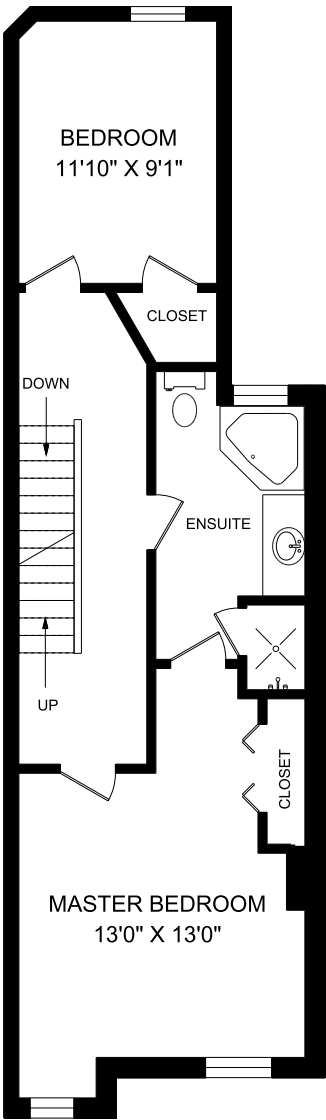
MAIN FLOOR  
634 SQUARE FEET



# 21 SALISBURY AVENUE



MEASURED ON AUGUST 30, 2016  
ROOM SIZES SHOULD BE  
CONSIDERED APPROXIMATE  
SINCE MEASUREMENTS ARE SUBJECT  
TO CERTIFICATION.  
© 2016 PLANIT MEASURING®



SECOND FLOOR  
625 SQUARE FEET

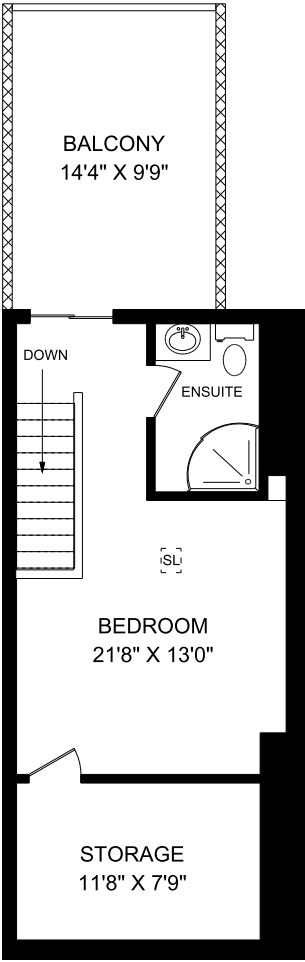


# 21 SALISBURY AVENUE



MEASURED ON AUGUST 30, 2016  
ROOM SIZES SHOULD BE  
CONSIDERED APPROXIMATE  
SINCE MEASUREMENTS ARE SUBJECT  
TO CERTIFICATION.

© 2016 PLANIT MEASURING<sup>®</sup>



THIRD FLOOR  
443 SQUARE FEET



# 21 SALISBURY AVENUE

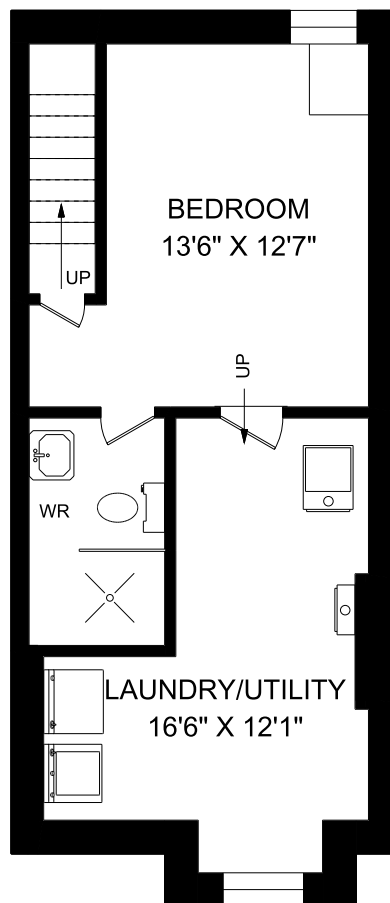


MEASURED ON AUGUST 30, 2016

ROOM SIZES SHOULD BE  
CONSIDERED APPROXIMATE

SINCE MEASUREMENTS ARE SUBJECT  
TO CERTIFICATION.

© 2016 PLANIT MEASURING®



LOWER LEVEL  
460 SQUARE FEET





TREVORBOND.CA  
m 416.357.7177  
w 416.465.7527  
f 416.465.6998

**BOSLEY**  

---

**REAL ESTATE**