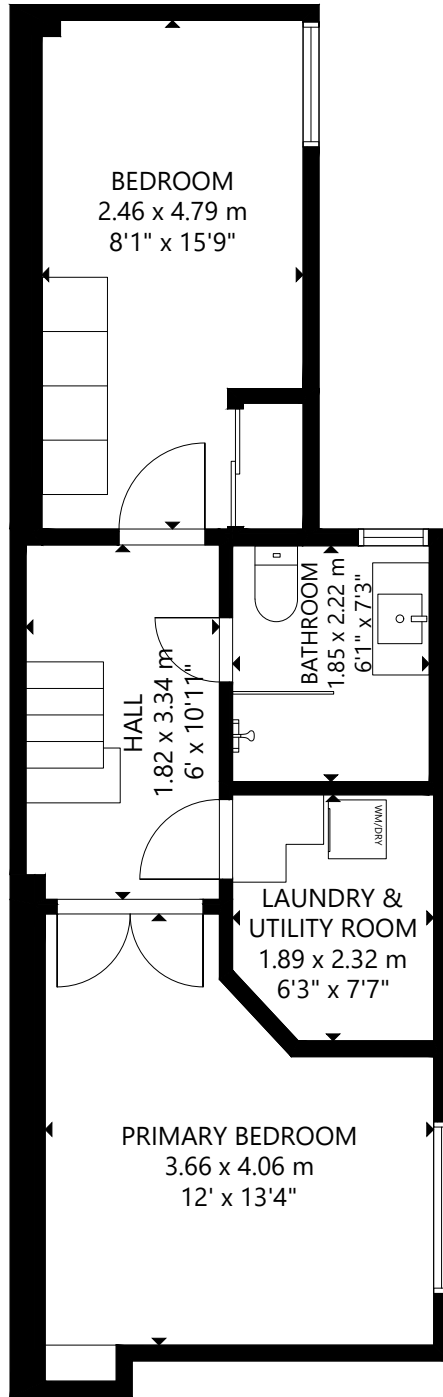
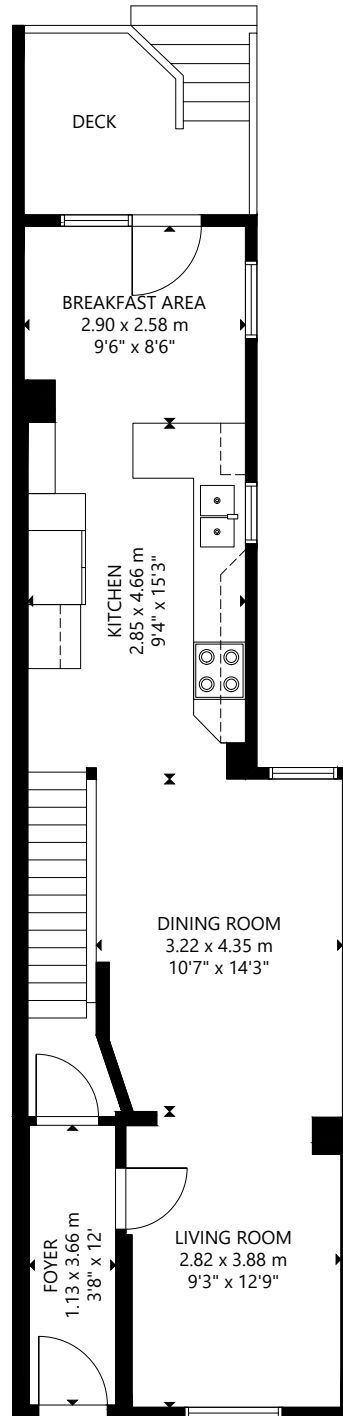


# 41 HAZELWOOD AVENUE



GROSS INTERNAL AREA  
LOWER LEVEL: 435 sq ft/ 40 m<sup>2</sup>, MAIN FLOOR: 586 sq ft/ 54 m<sup>2</sup>  
SECOND FLOOR: 525 sq ft/ 49 m<sup>2</sup>  
TOTAL: 1,546 sq ft/ 143 m<sup>2</sup>  
SIZE AND DIMENSIONS ARE APPROXIMATE, ACTUAL MAY VARY.

# 41 HAZELWOOD AVENUE



## GROSS INTERNAL AREA

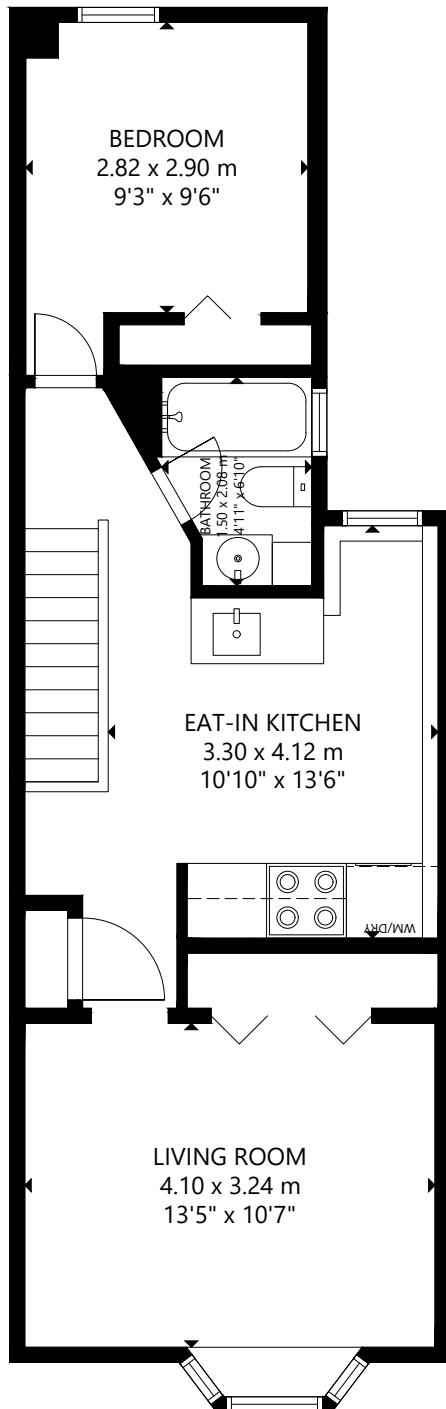
LOWER LEVEL: 435 sq ft/ 40 m<sup>2</sup>, MAIN FLOOR: 586 sq ft/ 54 m<sup>2</sup>

SECOND FLOOR: 525 sq ft/ 49 m<sup>2</sup>

TOTAL: 1,546 sq ft/ 143 m<sup>2</sup>

SIZE AND DIMENSIONS ARE APPROXIMATE, ACTUAL MAY VARY.

# 41 HAZELWOOD AVENUE



GROSS INTERNAL AREA  
LOWER LEVEL: 435 sq ft/ 40 m<sup>2</sup>, MAIN FLOOR: 586 sq ft/ 54 m<sup>2</sup>  
SECOND FLOOR: 525 sq ft/ 49 m<sup>2</sup>  
TOTAL: 1,546 sq ft/ 143 m<sup>2</sup>  
SIZE AND DIMENSIONS ARE APPROXIMATE, ACTUAL MAY VARY.