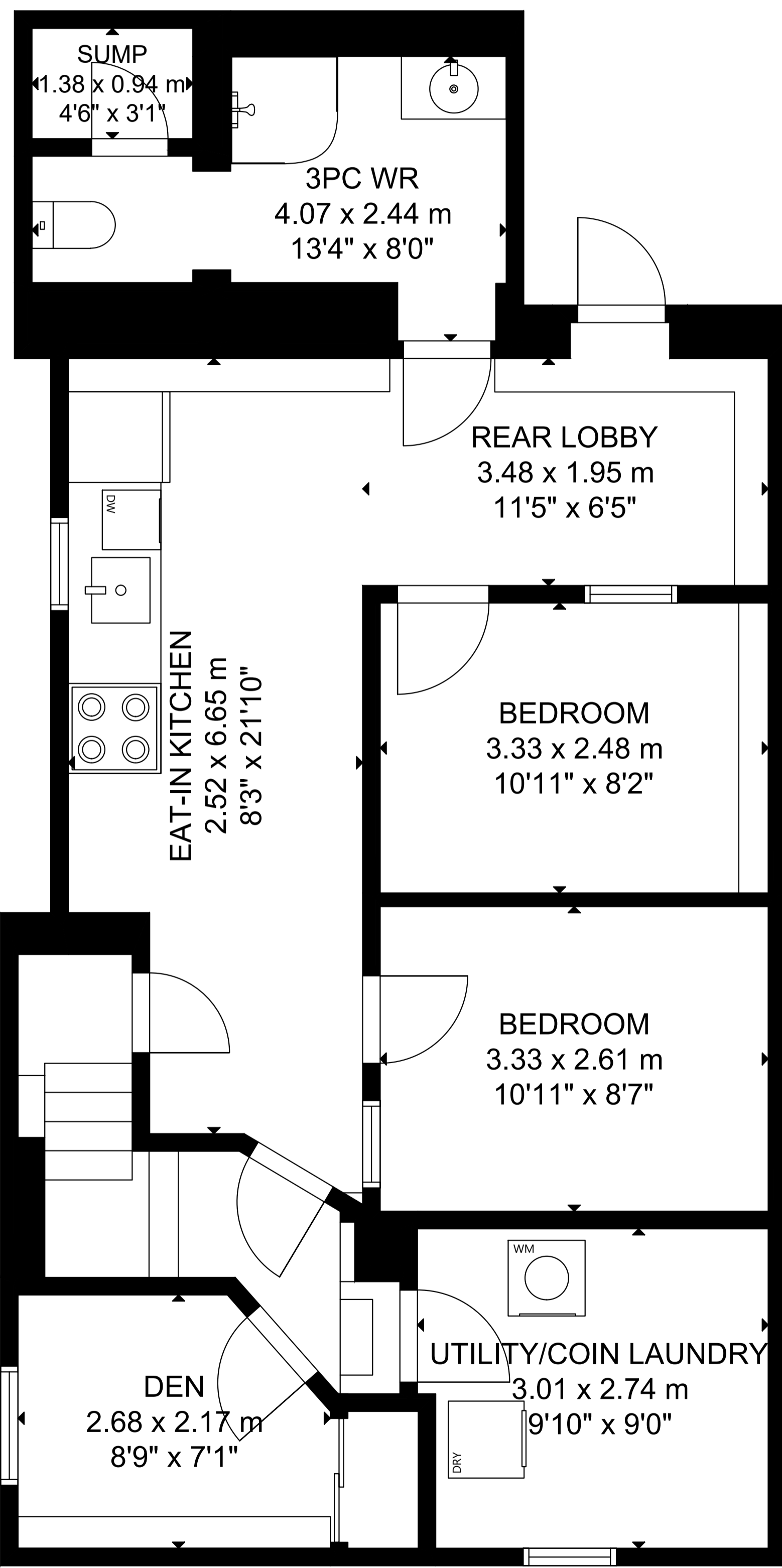
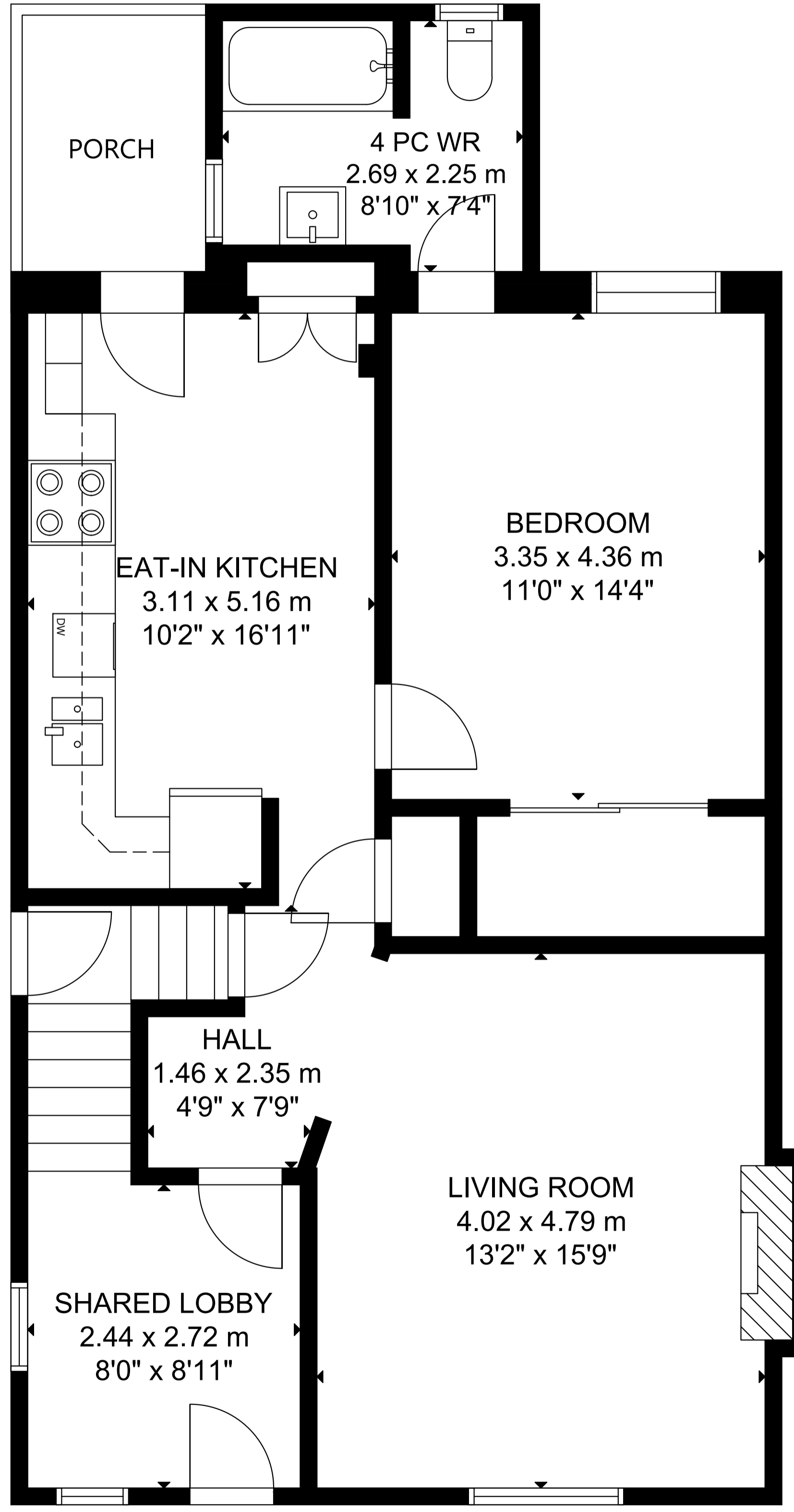


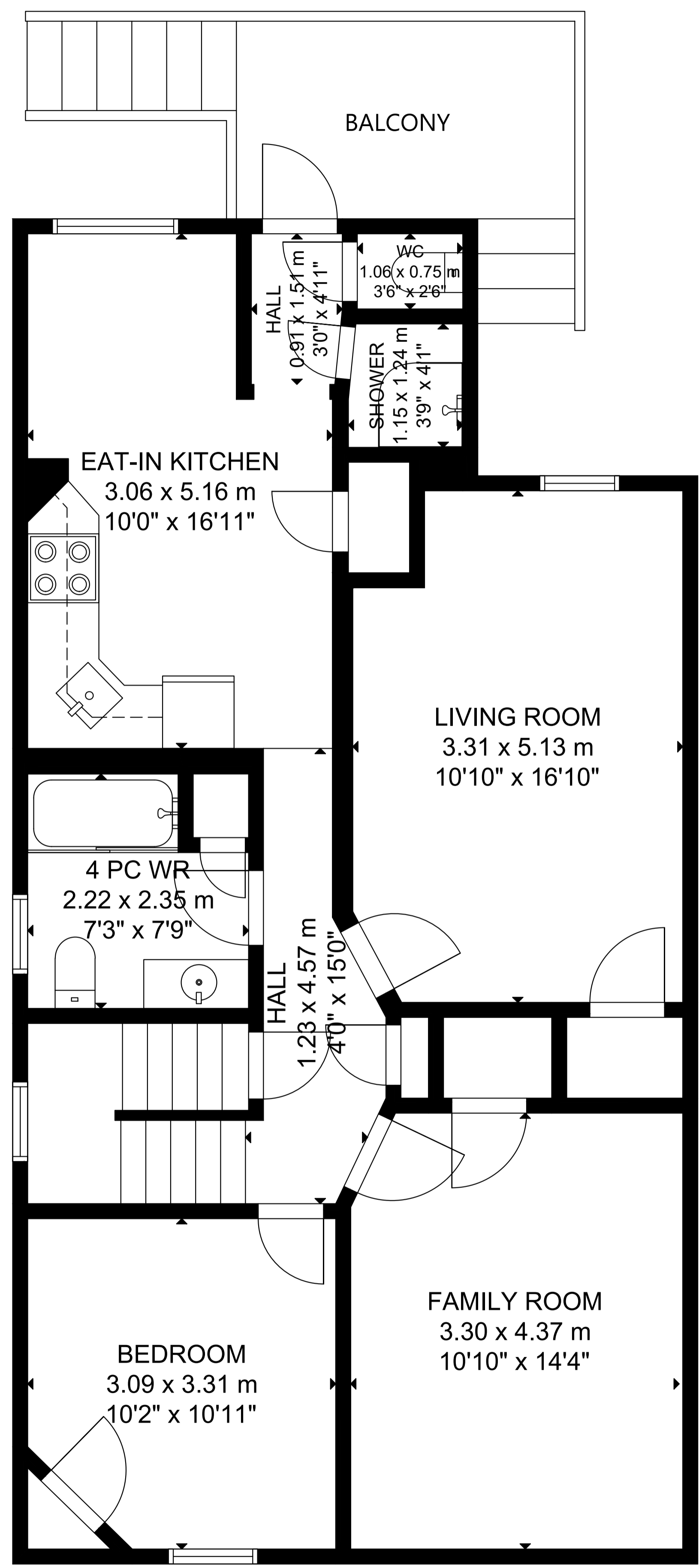
308 St George Street



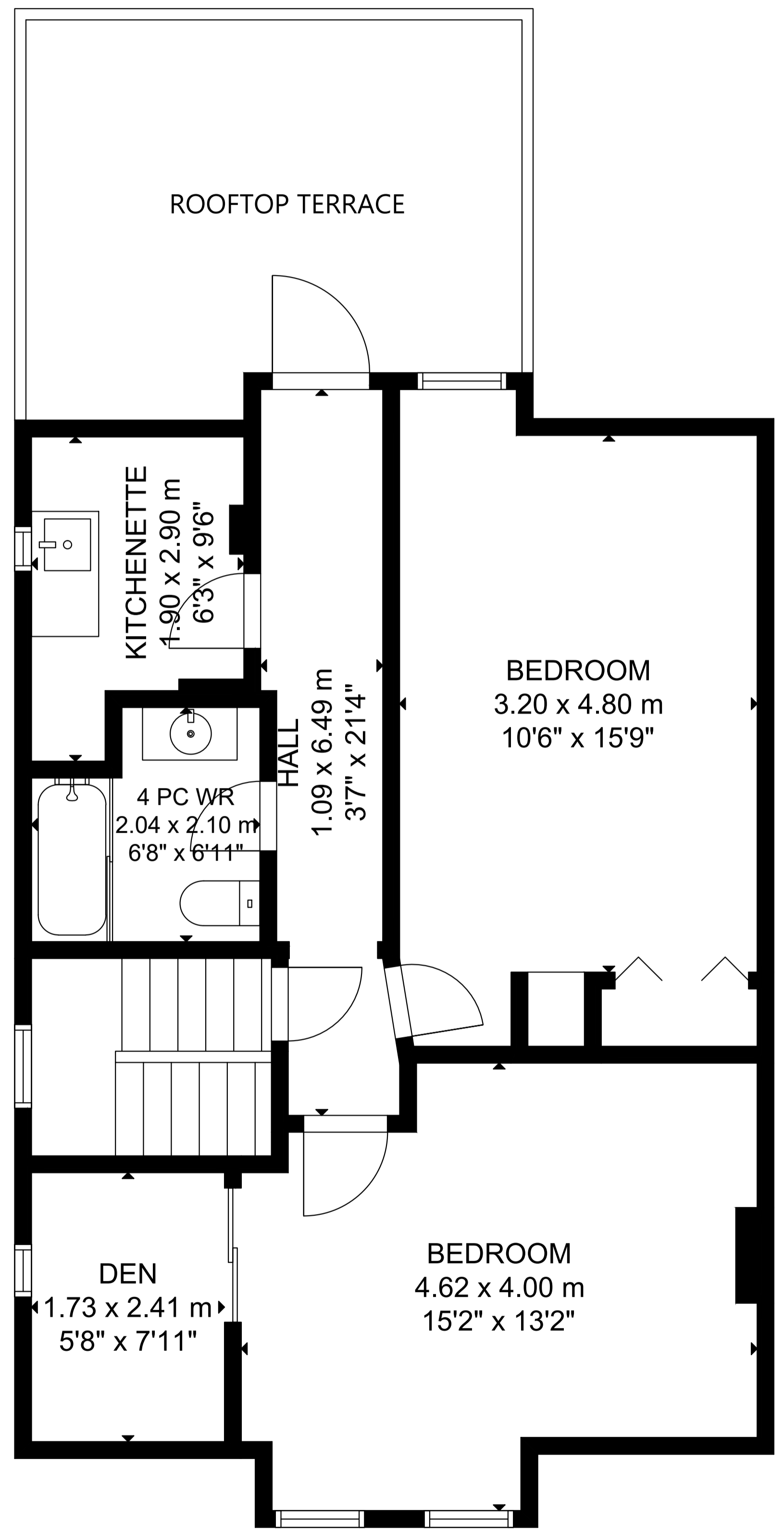
BASEMENT



MAIN LEVEL



UPPER LEVEL 1



UPPER LEVEL 2

GROSS INTERNAL AREA
 TOTAL: 293 m²/3,155 sq ft
 MAIN FLOOR: 77 m²/829 sq ft, UPPER LEVEL 1: 81 m²/872 sq ft
 UPPER LEVEL 2: 61 m²/653 sq ft, BASEMENT: 74 m²/801 sq ft
 SIZE AND DIMENSIONS ARE APPROXIMATE, ACTUAL MAY VARY.