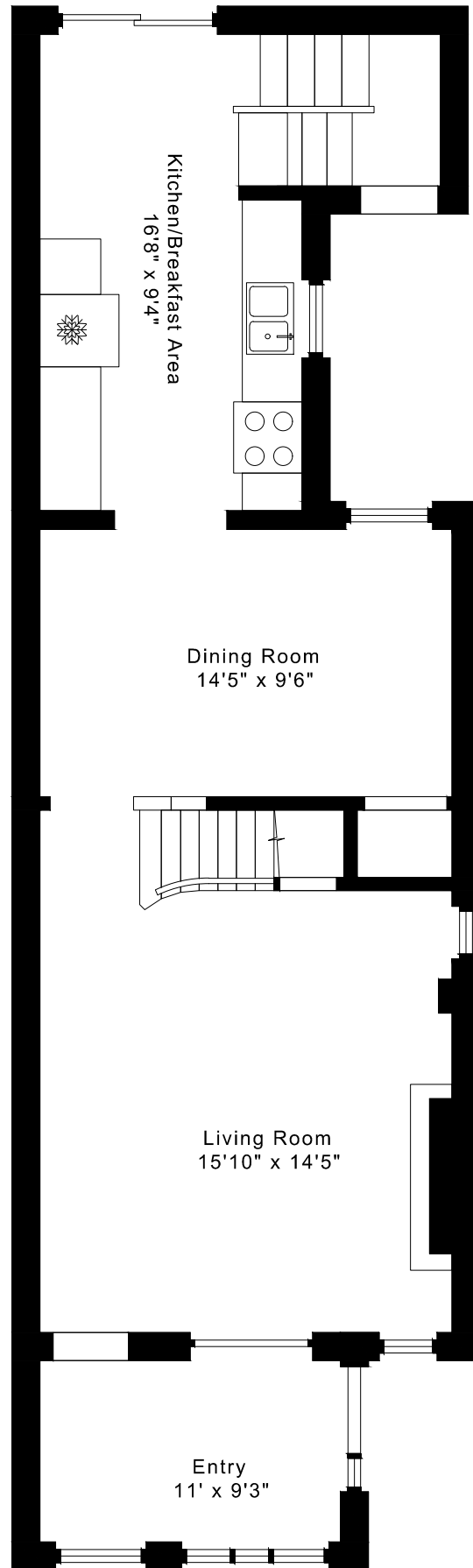
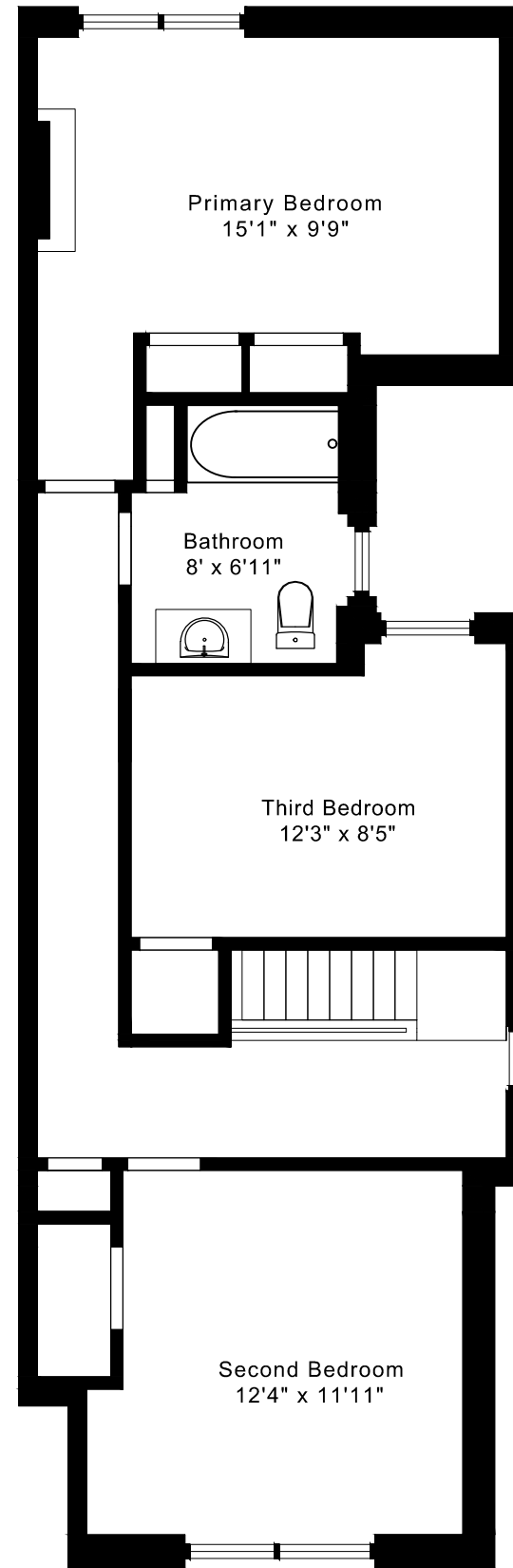


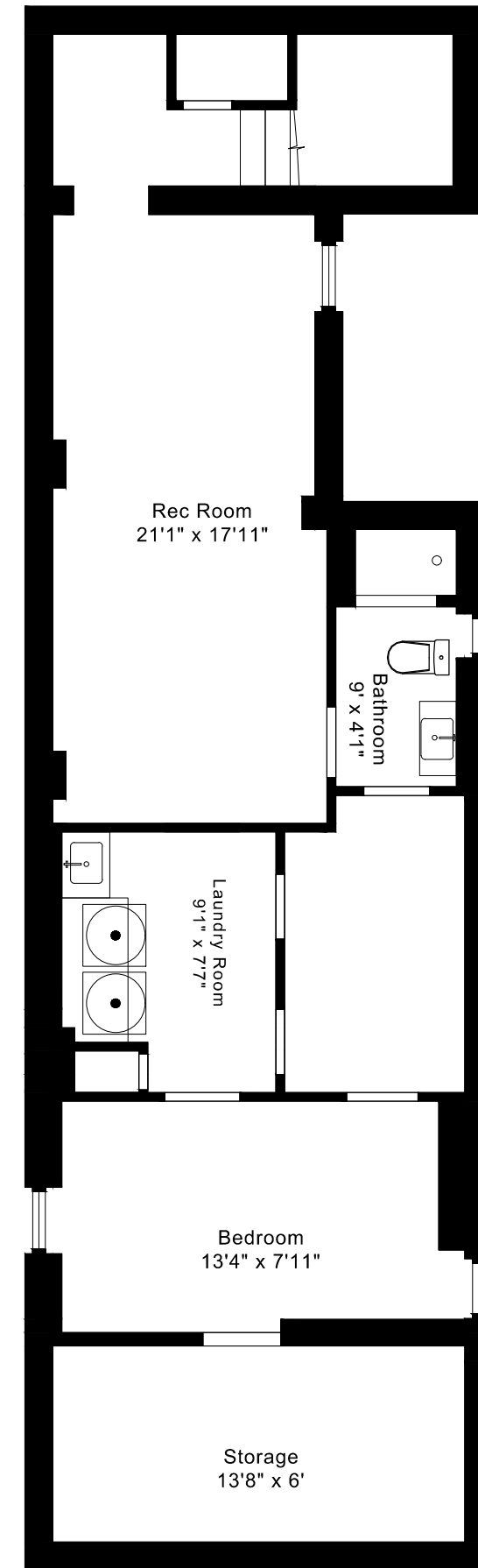
244 FULTON AVENUE FLOOR PLANS



MAIN FLOOR
815 SQUARE FEET



SECOND FLOOR
770 SQUARE FEET

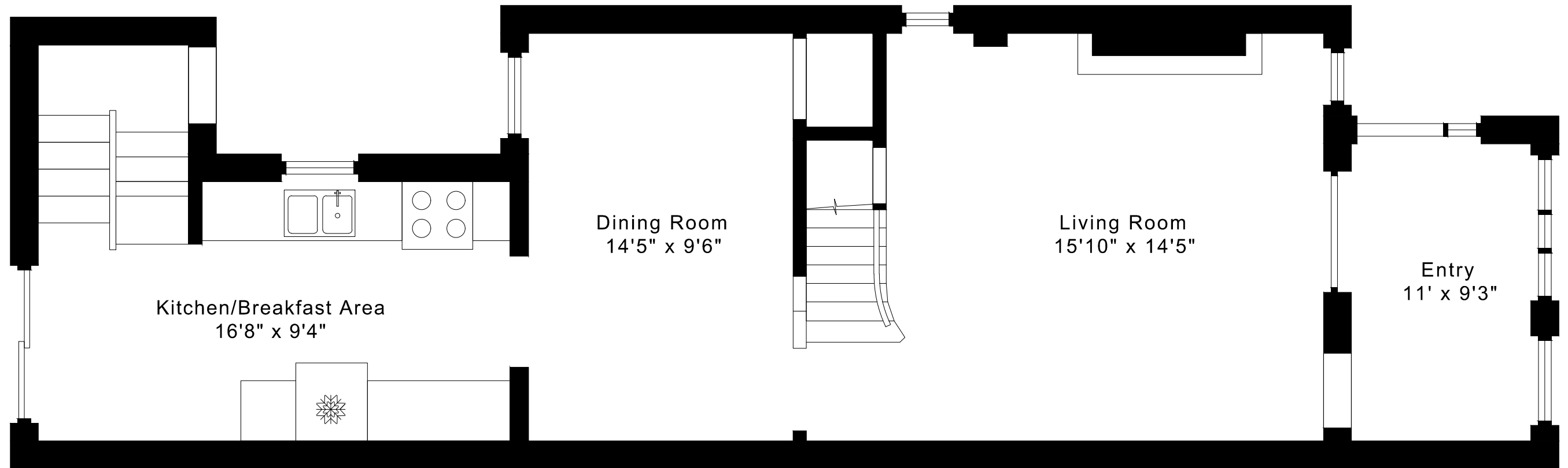


LOWER FLOOR
840 SQUARE FEET

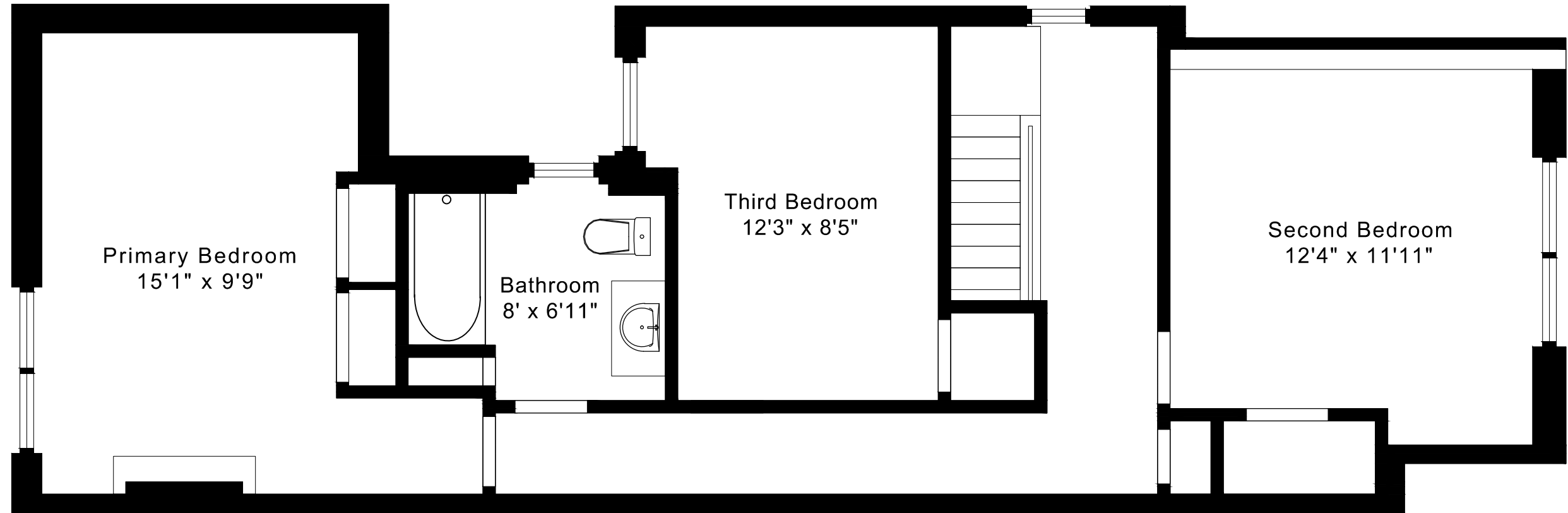
1585 sq ft + 840 sq ft
BELOW GRADE

244 FULTON AVENUE FLOOR PLANS

MAIN FLOOR 815 SQUARE FEET

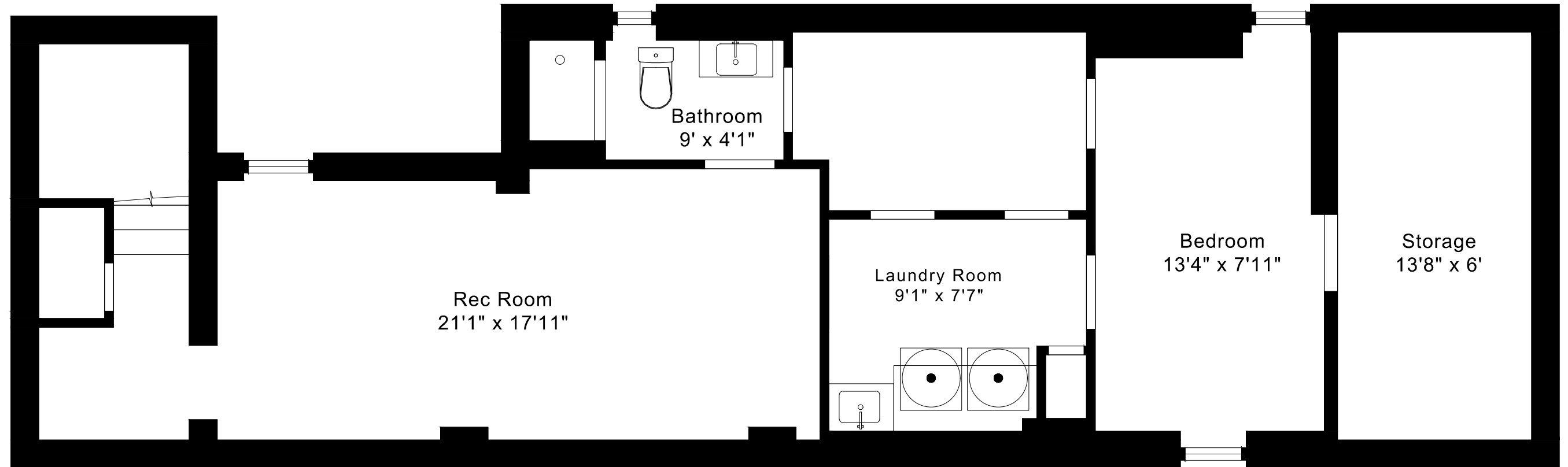


244 FULTON AVENUE
FLOOR PLANS
SECOND FLOOR 770 SQUARE FEET



244 FULTON AVENUE FLOOR PLANS

LOWER FLOOR 840 SQUARE FEET



244 FULTON AVENUE ROOM MEASUREMENTS

| Floor | Room | Imperial | | | | | | Metric [m] | | |
|--------|------------------------|----------|--------|-------|--------|--------|--------|------------|-------|--------|
| | | Length | | Width | | Height | | Length | Width | Height |
| | | Feet | Inches | Feet | Inches | Feet | Inches | | | |
| Second | Primary Bedroom | 15 | 1 | 9 | 9 | 8 | 1 | 4,60 | 2,97 | 2,46 |
| | Second Bedroom | 12 | 4 | 11 | 11 | 8 | 1 | 3,76 | 3,63 | 2,46 |
| | Third Bedroom | 12 | 3 | 8 | 5 | 8 | 1 | 3,73 | 2,57 | 2,46 |
| | Bathroom | 8 | 0 | 6 | 11 | 8 | 1 | 2,44 | 2,11 | 2,46 |
| Main | Entry | 11 | 0 | 6 | 3 | 8 | 8 | 3,35 | 1,91 | 2,64 |
| | Living Room | 15 | 10 | 14 | 5 | 8 | 8 | 4,83 | 4,39 | 2,64 |
| | Dining Room | 14 | 5 | 9 | 6 | 8 | 8 | 4,39 | 2,90 | 2,64 |
| | Kitchen/Breakfast Area | 16 | 8 | 9 | 4 | 8 | 8 | 5,08 | 2,84 | 2,64 |
| Lower | Rec Room | 21 | 6 | 9 | 6 | 6 | 5 | 6,55 | 2,90 | 1,96 |
| | Bedroom | 13 | 4 | 7 | 11 | 6 | 5 | 4,06 | 2,41 | 1,96 |
| | Bathroom | 9 | 0 | 4 | 1 | 6 | 5 | 2,74 | 1,24 | 1,96 |
| | Laundry Room | 9 | 1 | 7 | 7 | 6 | 5 | 2,77 | 2,31 | 1,96 |
| | Storage | 13 | 8 | 6 | 0 | 6 | 5 | 4,17 | 1,83 | 1,96 |

CAPTURED ON: 27 MAR 2026
 DIMENSIONS ARE APPROXIMATE AND SHOULD BE CONSIDERED
 ILLUSTRATIVE ONLY.

1585 sq ft + 840 sq ft
 BELOW GRADE

The following is a disclaimer regarding the approximate nature of dimensions and floor areas listed in this document:

Disclaimer:

The dimensions and floor areas listed in this document are provided as an estimate only and are intended to be used for illustration purposes only. These measurements are not necessarily meant to be a perfect representation of the actual space.

Notes regarding measurement methods and accuracy:

The utilization of laser measurement technology during the 3D model capturing process at the location provides an accurate representation of floor plans, with a typical margin of error of 3-5%. For the most accurate and official measurement data, it is advised to consult official documents such as MPAC records, builder's pre-construction plans, or data from certified measurement companies.

Exterior wall thickness is included in the calculation of the overall square footage and is considered as a component of the footprint. The wall thickness measurement is obtained onsite whenever possible, or estimated in the event where obtaining onsite measurements is not possible, such as in the case of condominium buildings where wall thickness may vary throughout the building.